

Check List:

Before uploading your PDF, please check the following,

- PDF format should be PDF/X1a
- All images/Graphics should be Hires
- All Images/Graphics must be saved in CMYK color space
- Reverse text size should be 12 points or greater
- Knockout/Overprint should be taken care

GUIDELINES TO CREATE PDF IN ACROBAT PRO



PDF creation in Acrobat Pro version 9

In PDF settings select PDF/X-1a:2001 to create PDF from any PS,PRN in acrobat

Adobe PDF Settings

Default Settings: PDF/X-1a:2001

Compatibility: Acrobat 4 (PDF 1.3)

💡 Use these settings to create Adobe PDF documents that are to be checked or must conform to PDF/X-1a:2001, an ISO standard for graphic content exchange. For more information on creating PDF/X-1a compliant PDF documents, please refer to the Acrobat User

Progress

Status: Ready 0%

Pause

Cancel Job(s)

Clear List

PDF File	Size	Time	PS File	Size	Settir

GUIDELINES TO EXPORT PDF FROM

- **ADOBE PHOTOSHOP**

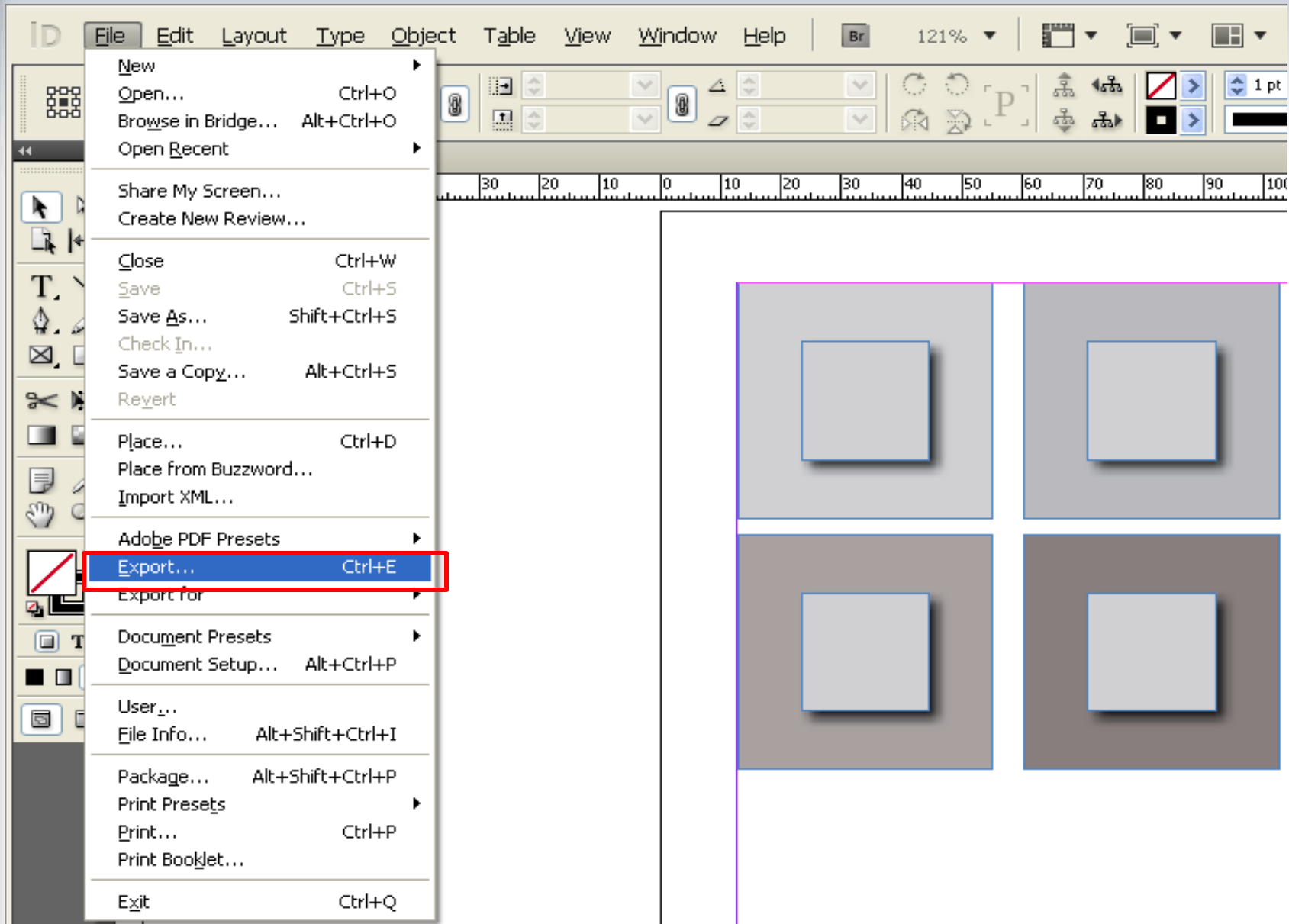
- **IN DESIGN**

- **ILLUSTRATOR**

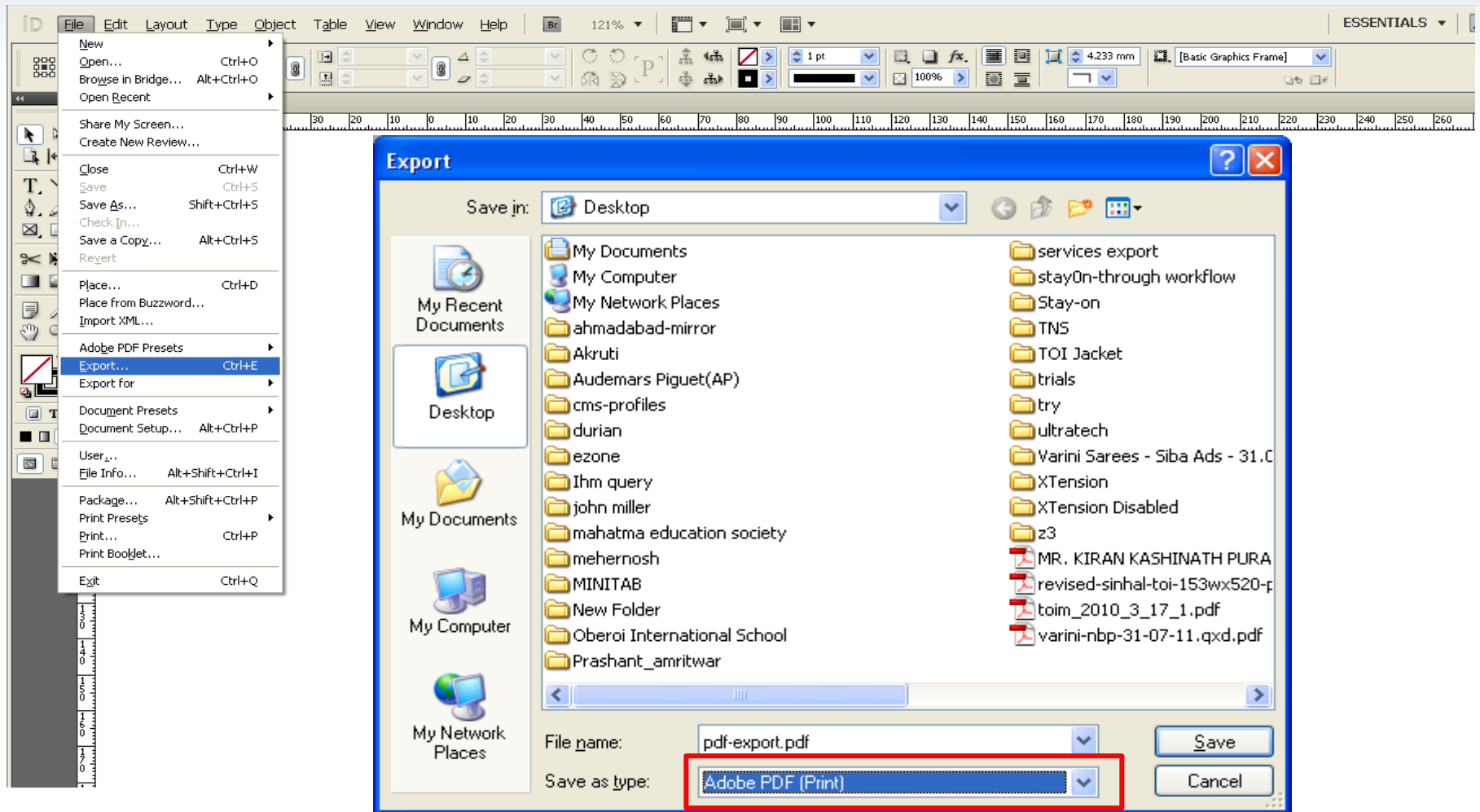
VERSION CS 5 & ABOVE



Follow below settings in Export option...



Save as type as Adobe PDF (Print).



Standard :PDF/X-1a:2001 Compatibility: Acrobat 4 (PDF 1.3)

The image shows the Adobe InDesign interface with the 'Export Adobe PDF' dialog box open. A red box highlights the 'Adobe PDF Preset', 'Standard', and 'Compatibility' dropdowns in both the top toolbar and the dialog box. An arrow points from the toolbar to the dialog box.

Toolbar Settings:

- Adobe PDF Preset: [PDF/X-1a:2001]
- Standard: PDF/X-1a:2001
- Compatibility: Acrobat 4 (PDF 1.3)

Export Adobe PDF Dialog Box Settings:

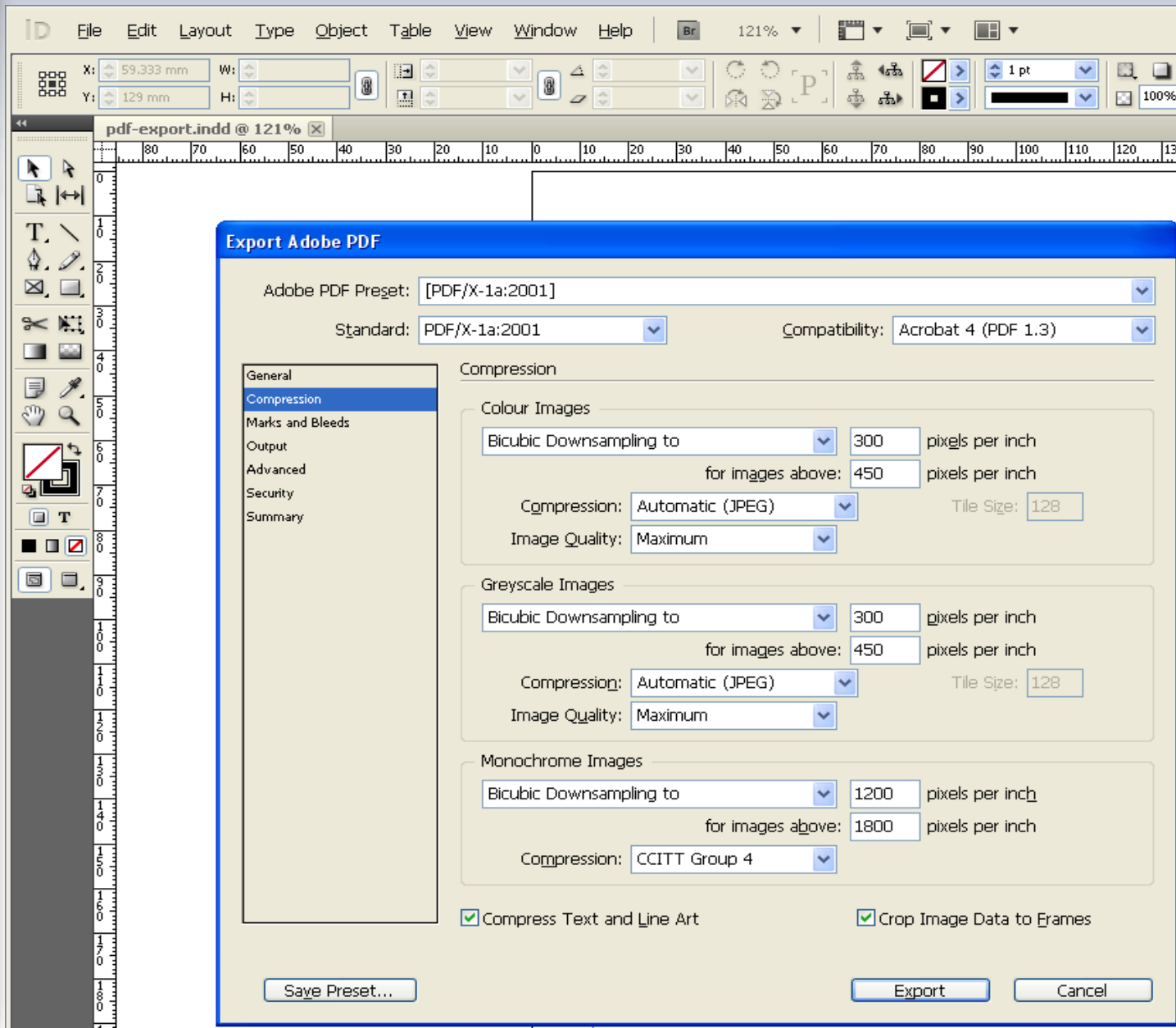
- Adobe PDF Preset: [PDF/X-1a:2001]
- Standard: PDF/X-1a:2001
- Compatibility: Acrobat 4 (PDF 1.3)

General Tab:

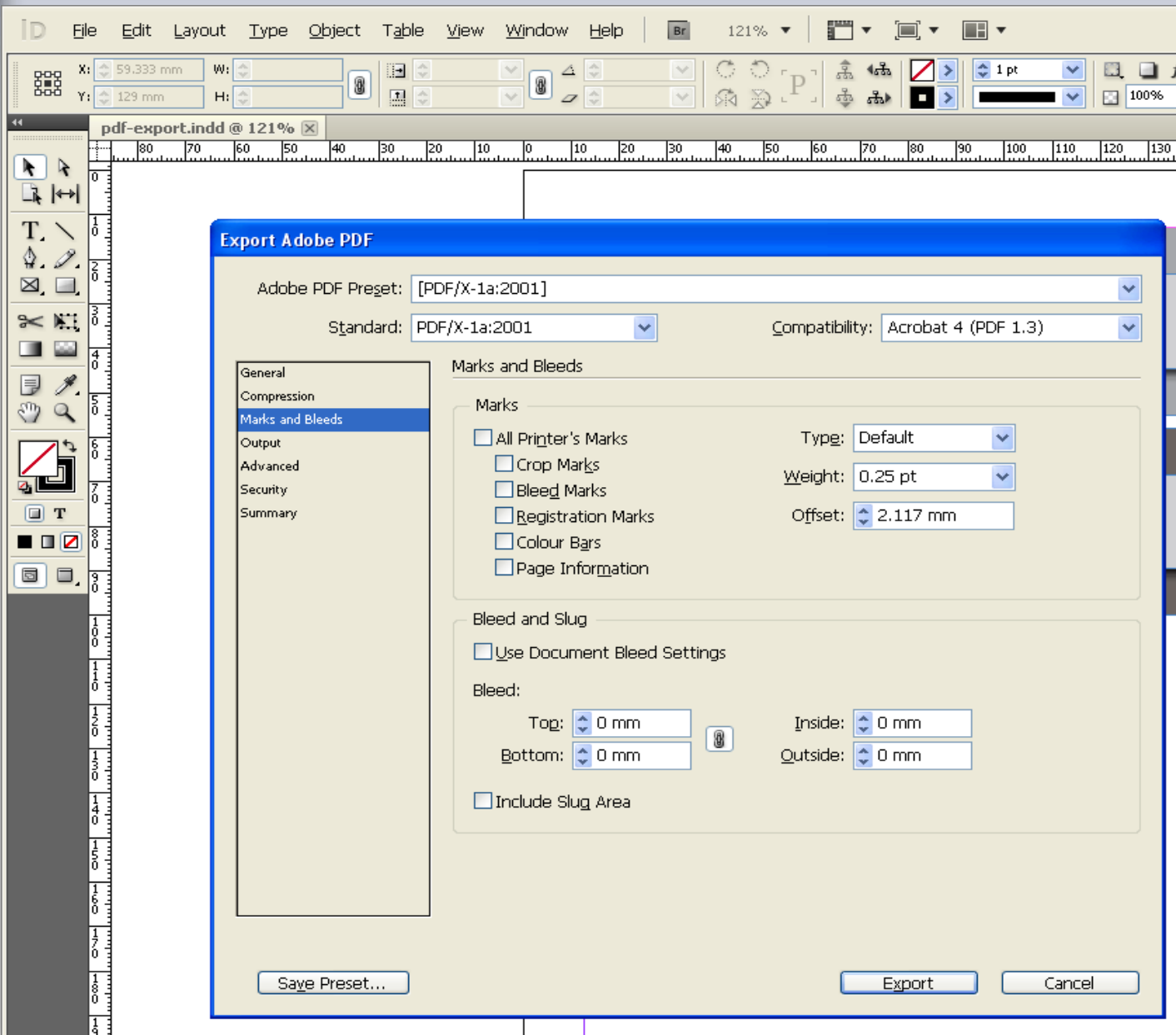
- Description:** Use these settings to create Adobe PDF documents that are to be checked or must conform to PDF/X-1a:2001, an ISO standard for graphic content exchange. For more information on creating PDF/X-1a compliant PDF documents, please refer to the Acrobat User Guide. Created PDF documents can be opened with Acrobat.
- Pages:**
 - All
 - Range: 1
 - Spreads
- Options:**
 - Embed Page Thumbnails
 - Optimise for Fast Web View
 - Create Tagged PDE
 - View PDF after Exporting
 - Create Acrobat Layers
 - Export Layers: Visible & Printable Layers
- Include:**
 - Bookmarks
 - Hyperlinks
 - Non-Printing Objects
 - Visible Guides and Baseline Grids
- Interactive Elements:** Do Not Include

Buttons: Save Preset..., Export, Cancel

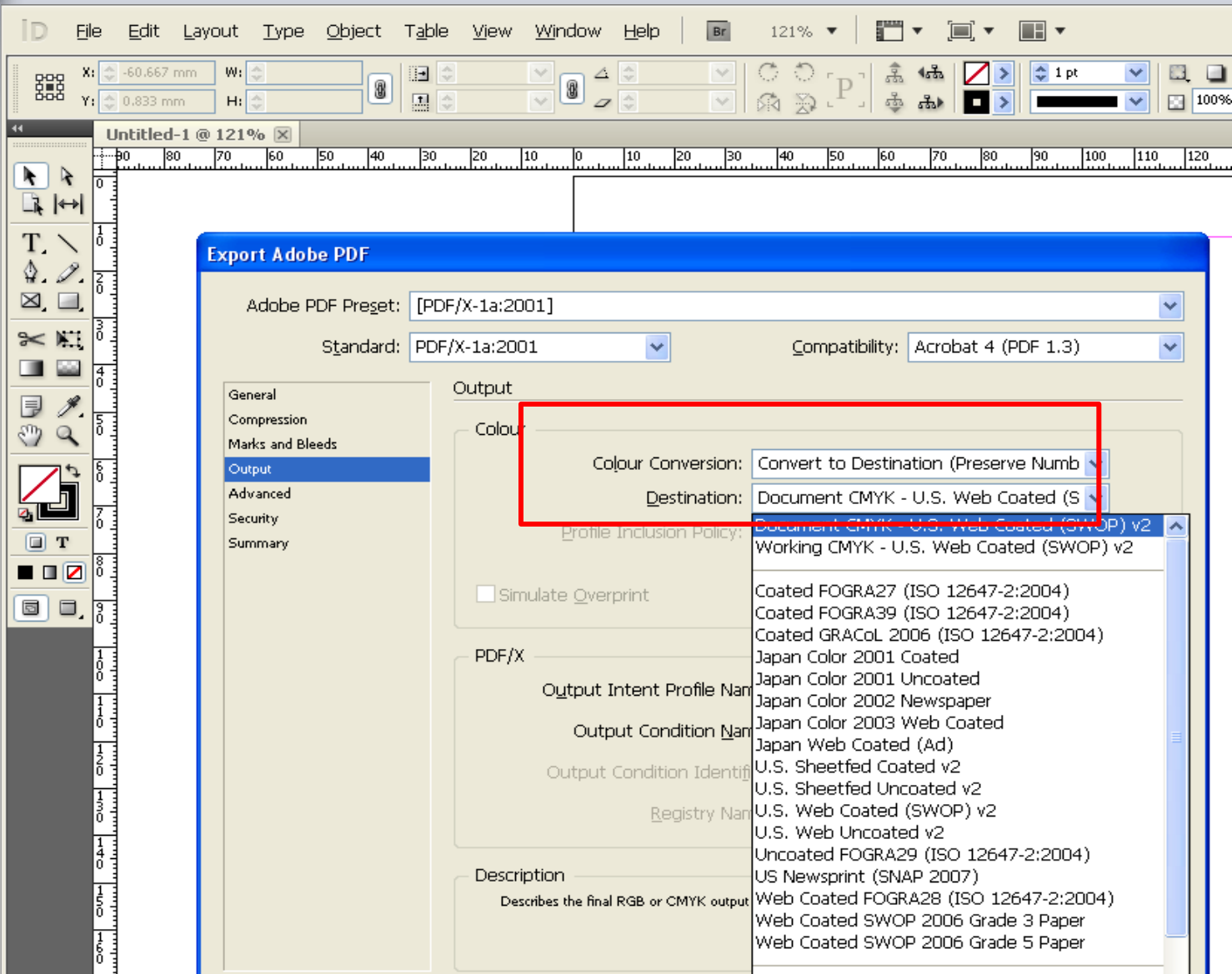
Compression Options : Default Settings



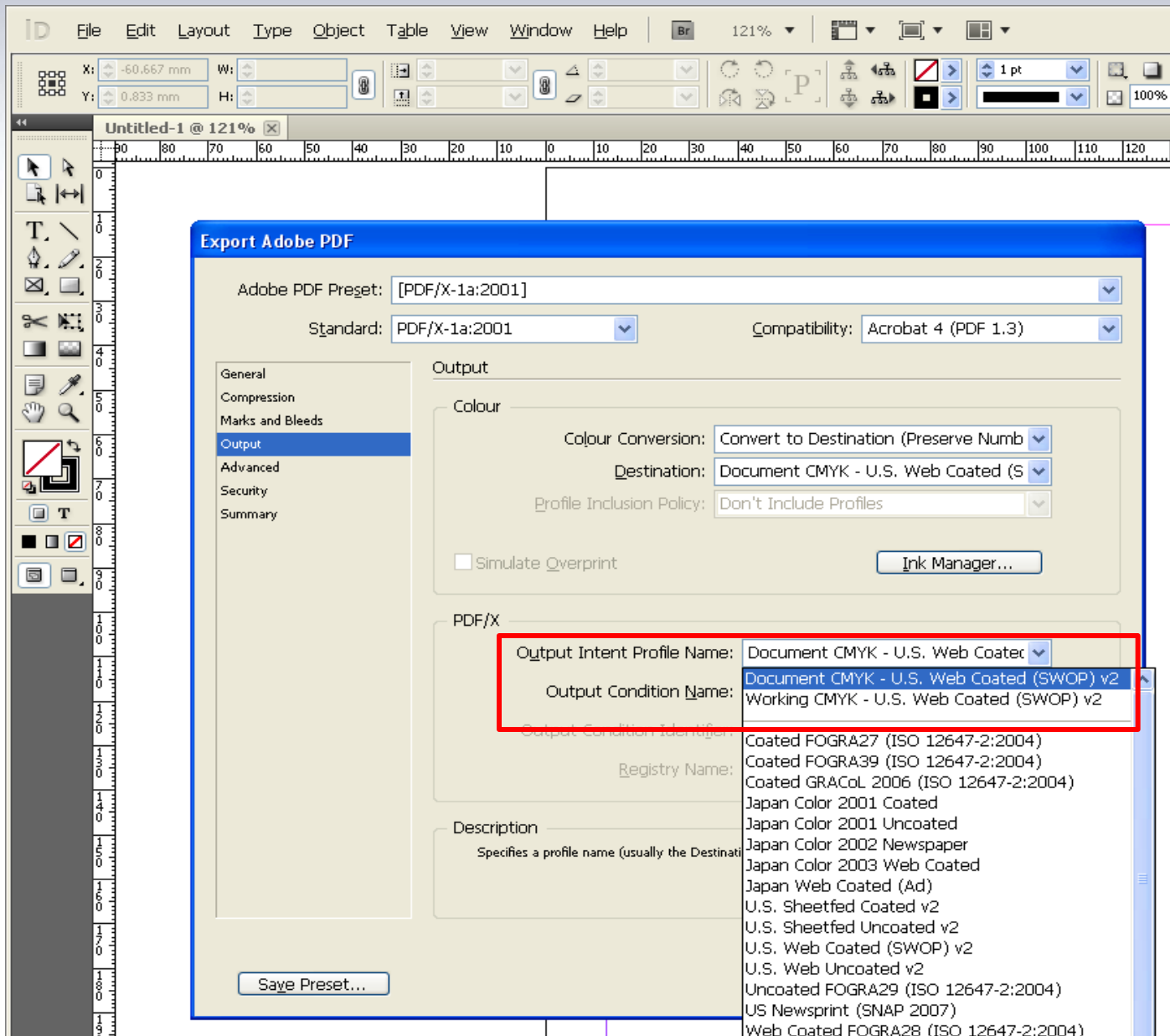
Marks and Bleed : Default Settings



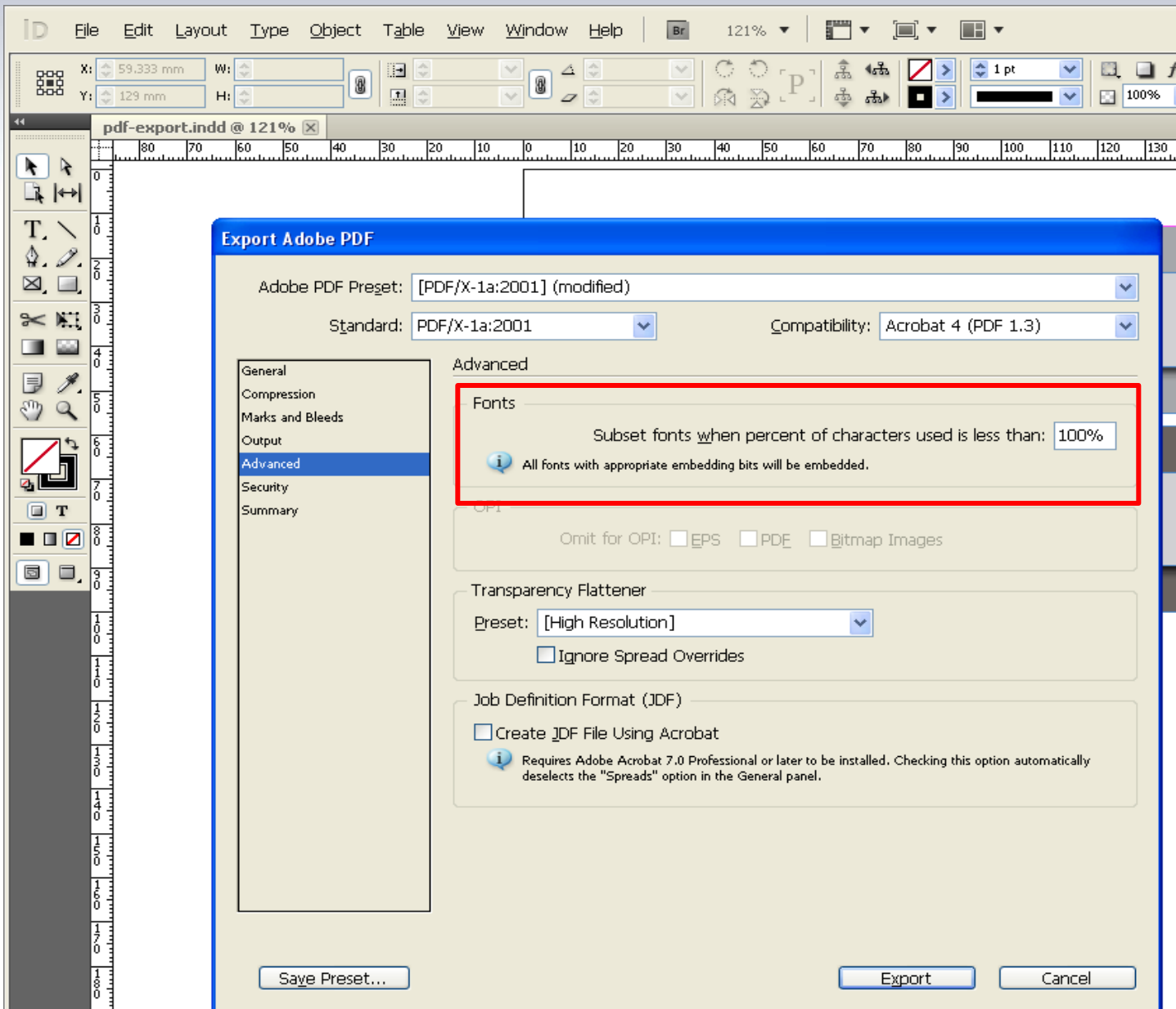
Output color space : Default Settings



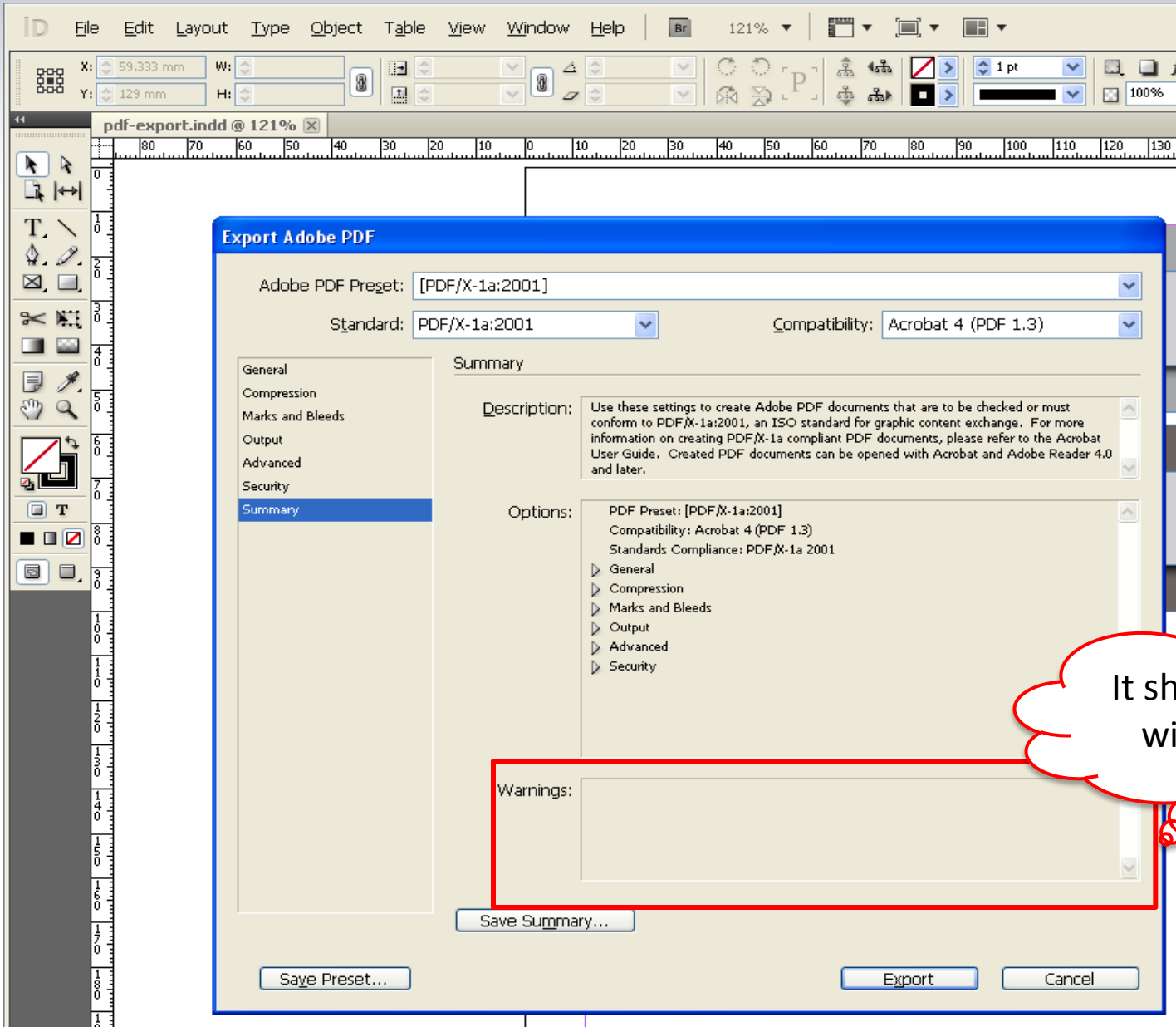
Output color space : Default Setting



Fonts: Default settings



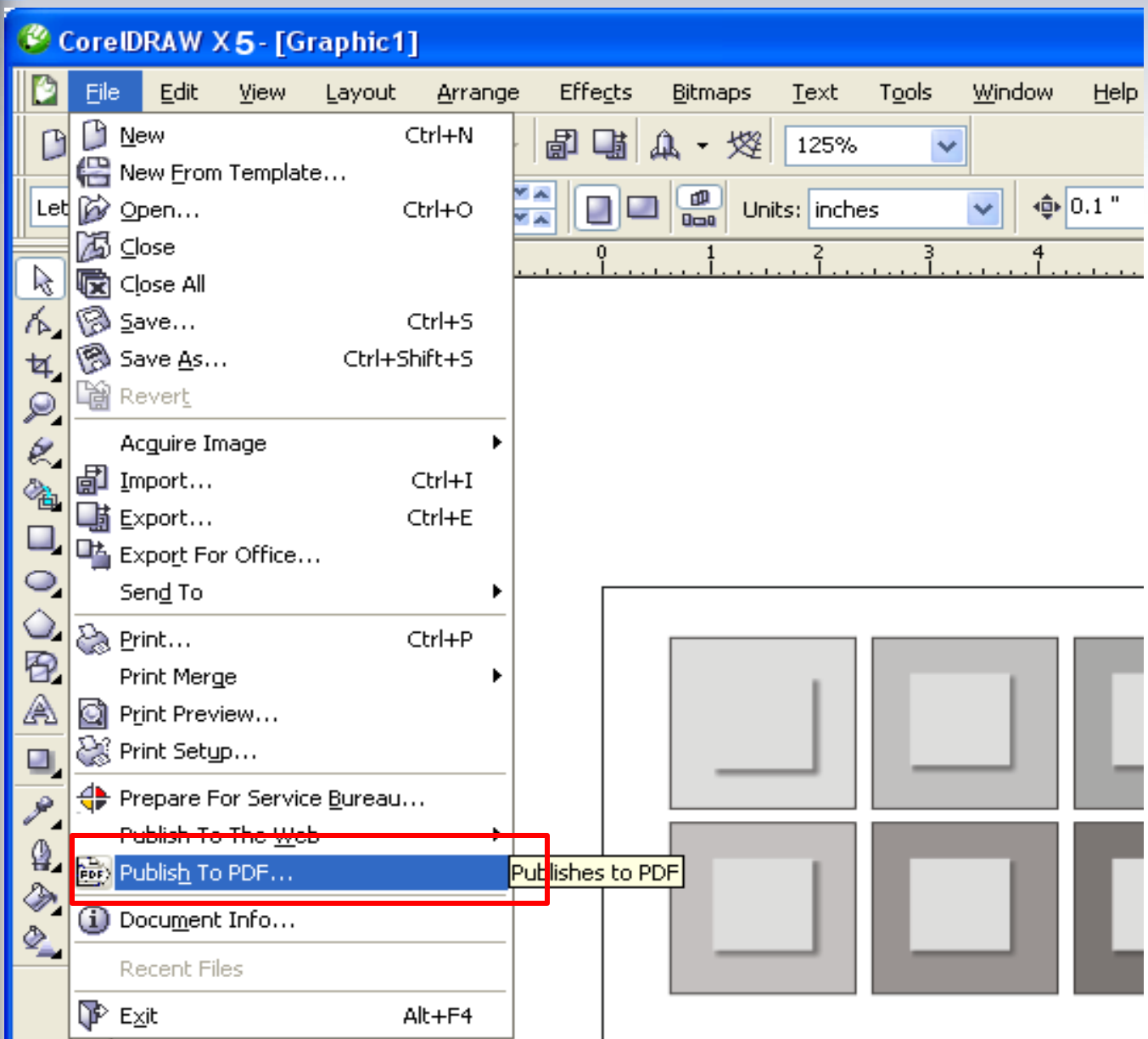
Summary:



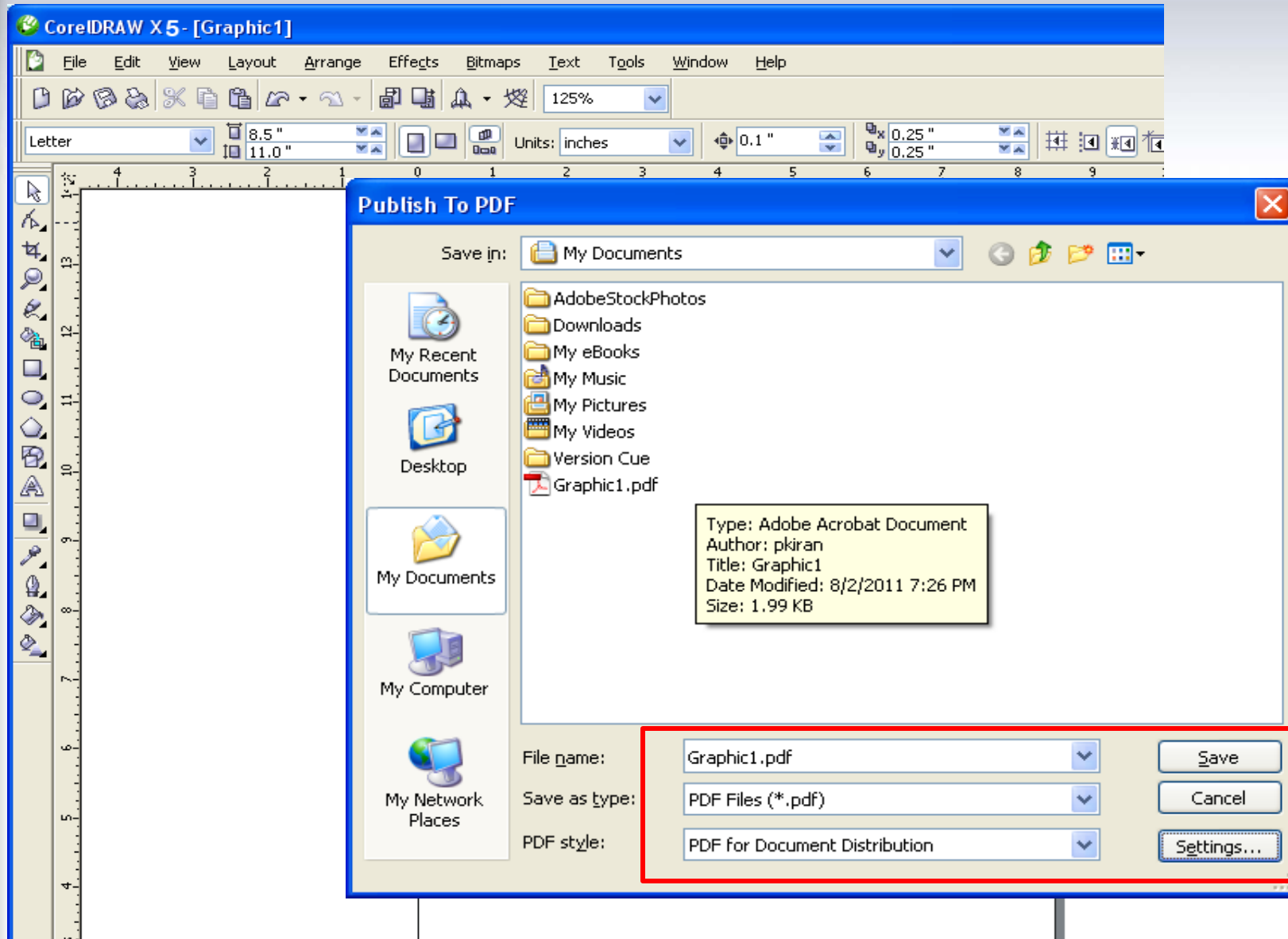
GUIDELINES TO EXPORT PDF FROM COREL DRAW X5



To Generate PDF click Publish to PDF:

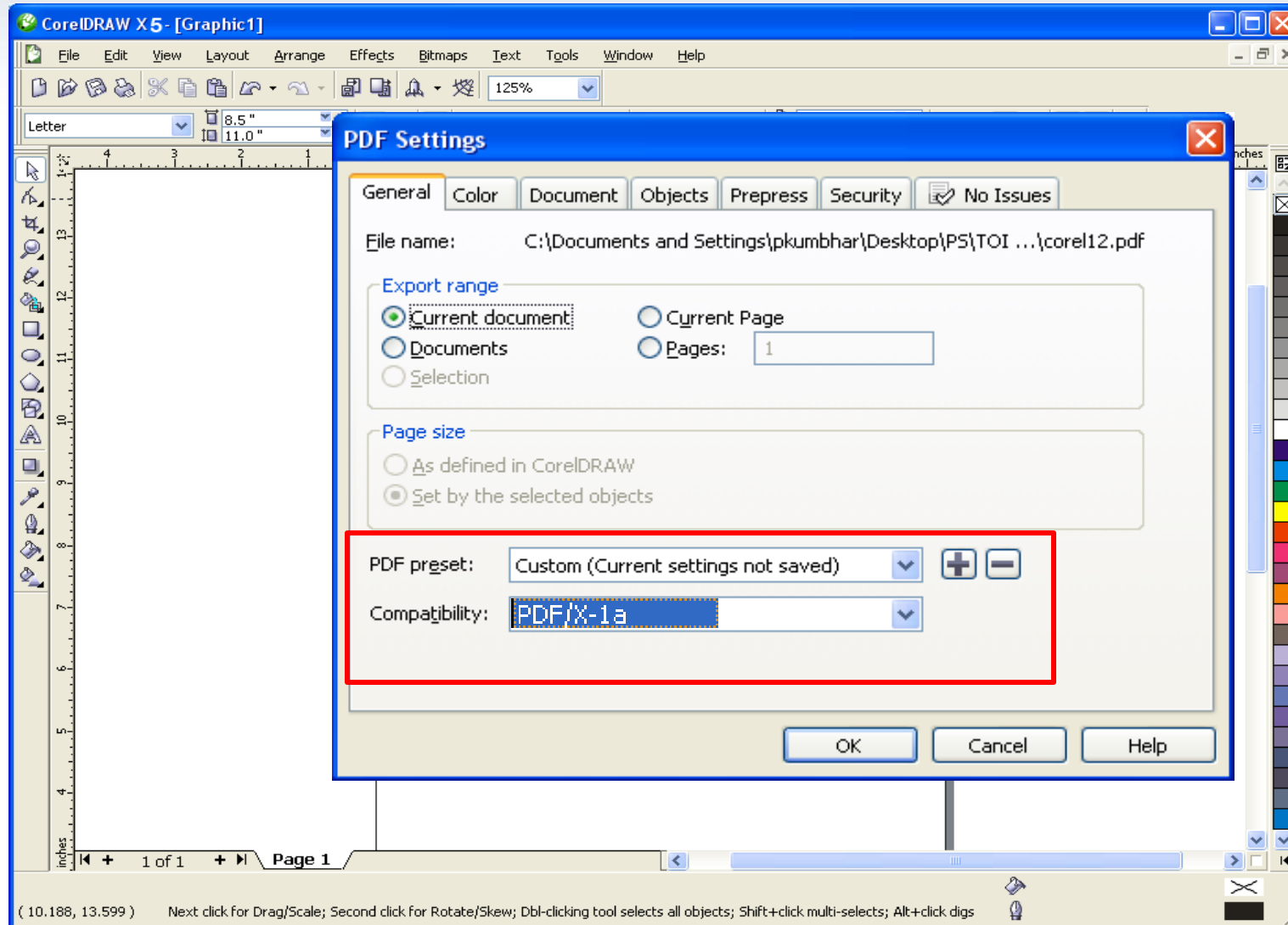


In Publish to PDF Click on Settings:



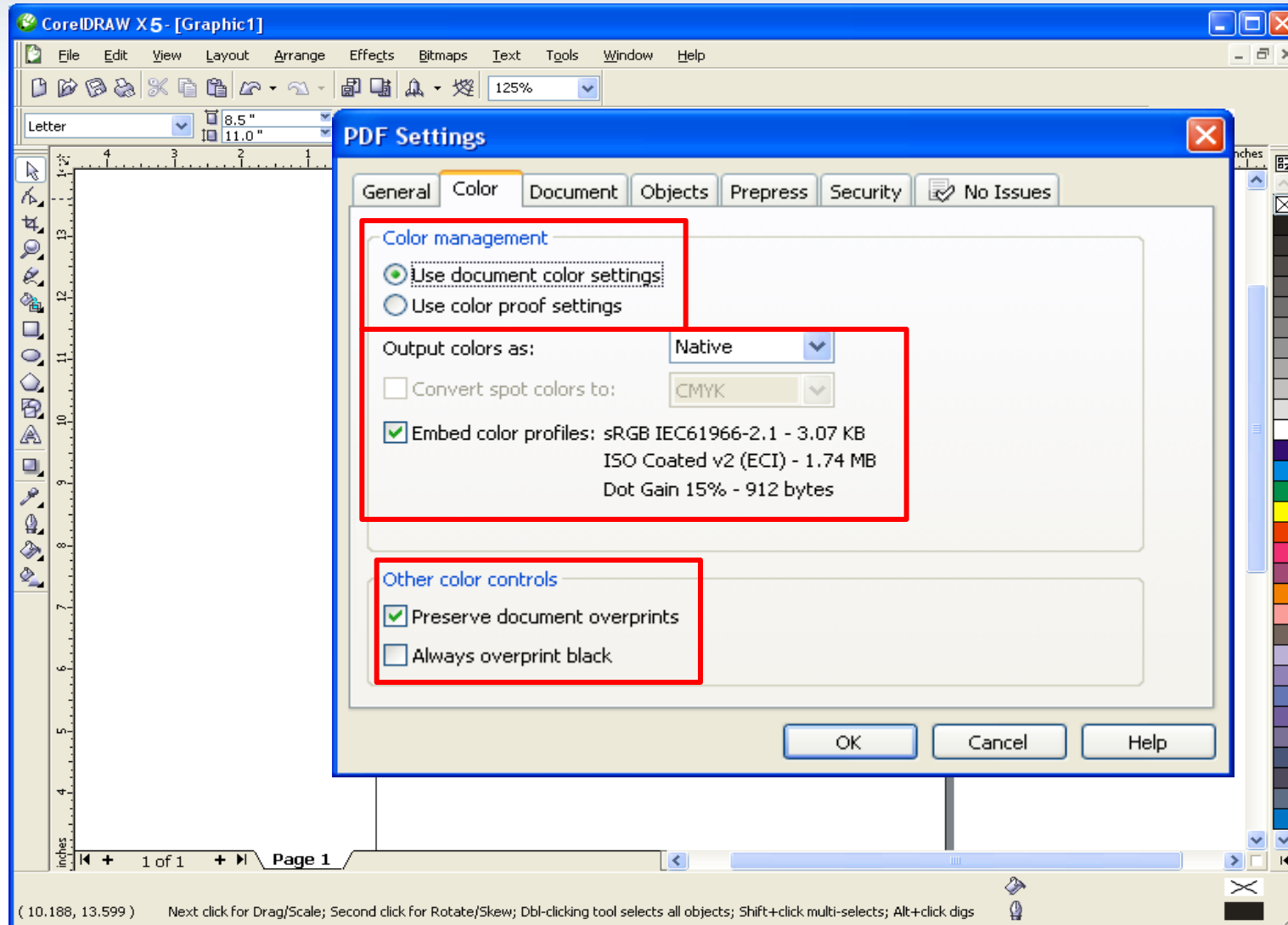
PDF creation in Corel X5

In General category select compatibility PDF/X-1a



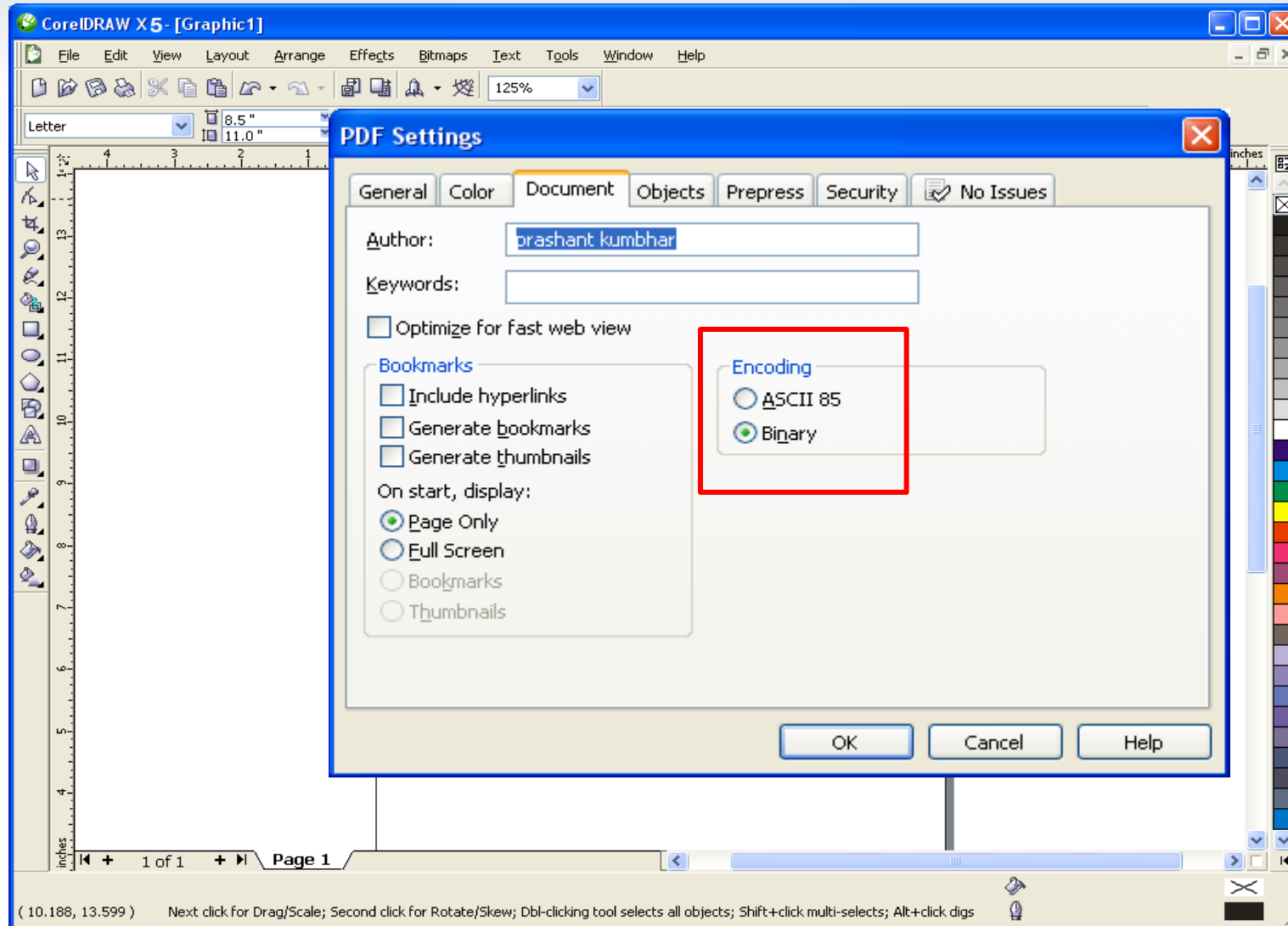
PDF creation in Corel X5

Check following options in Color Category

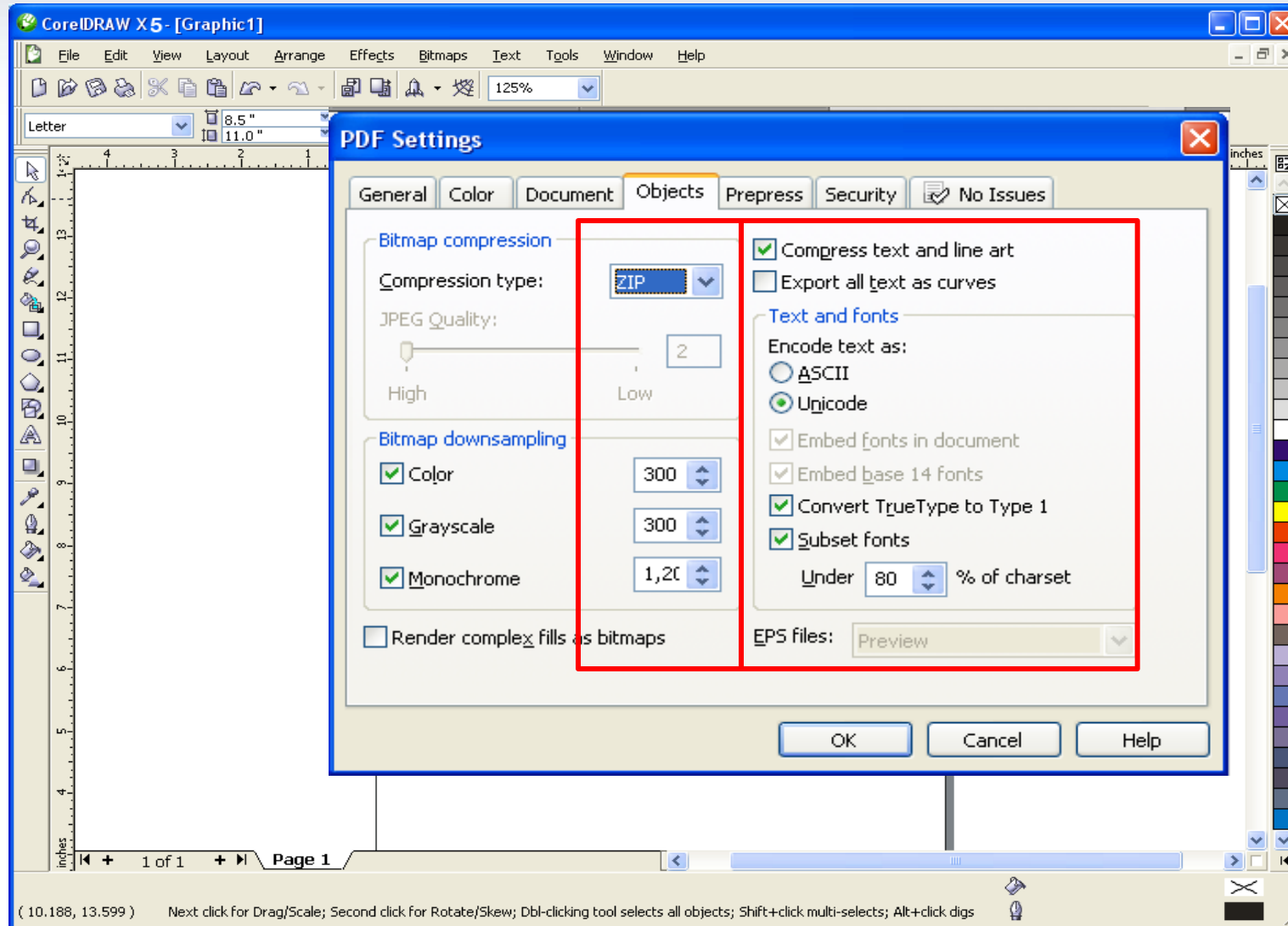


PDF creation in Corel X5

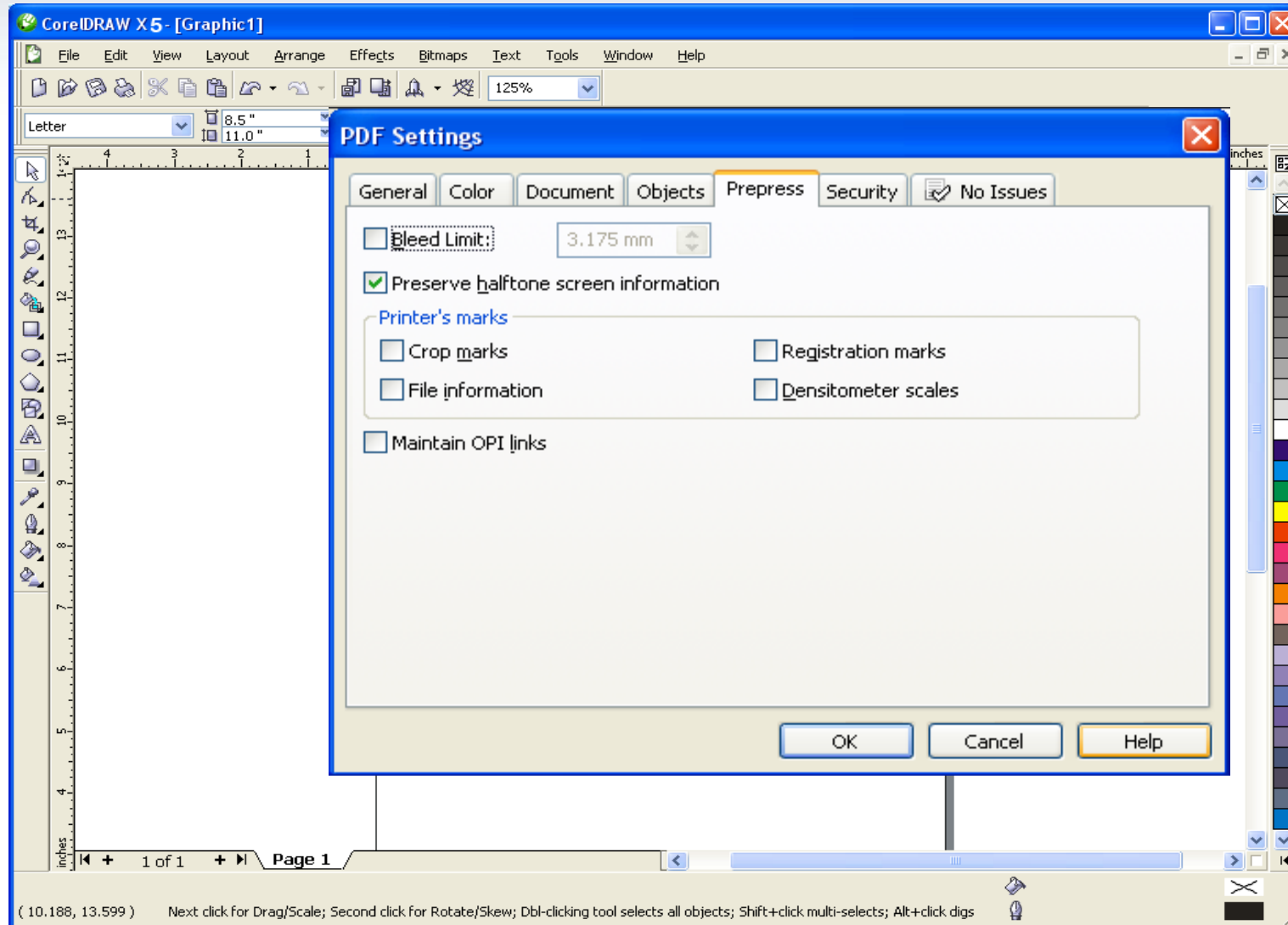
Document options



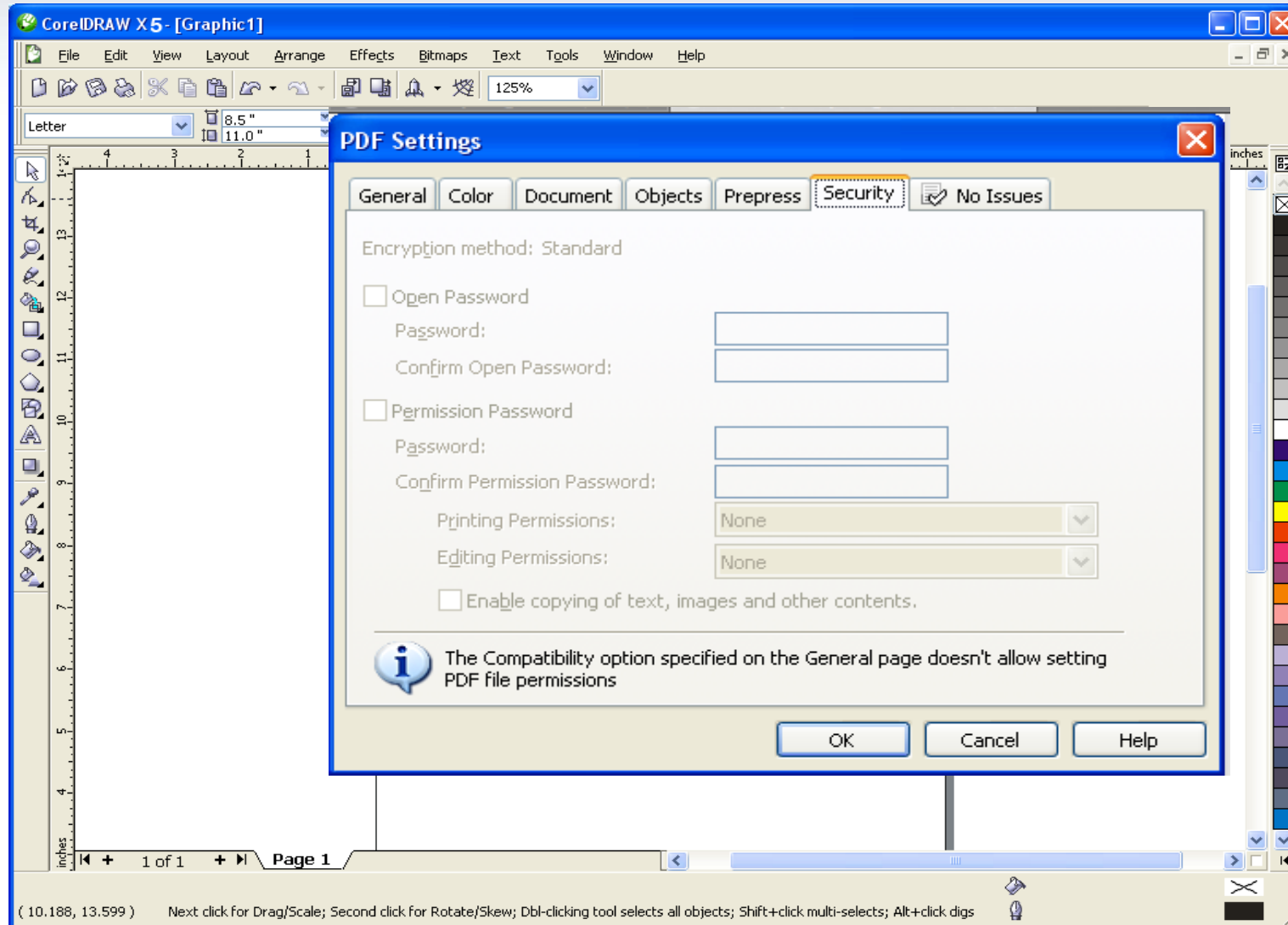
PDF creation in Corel X5



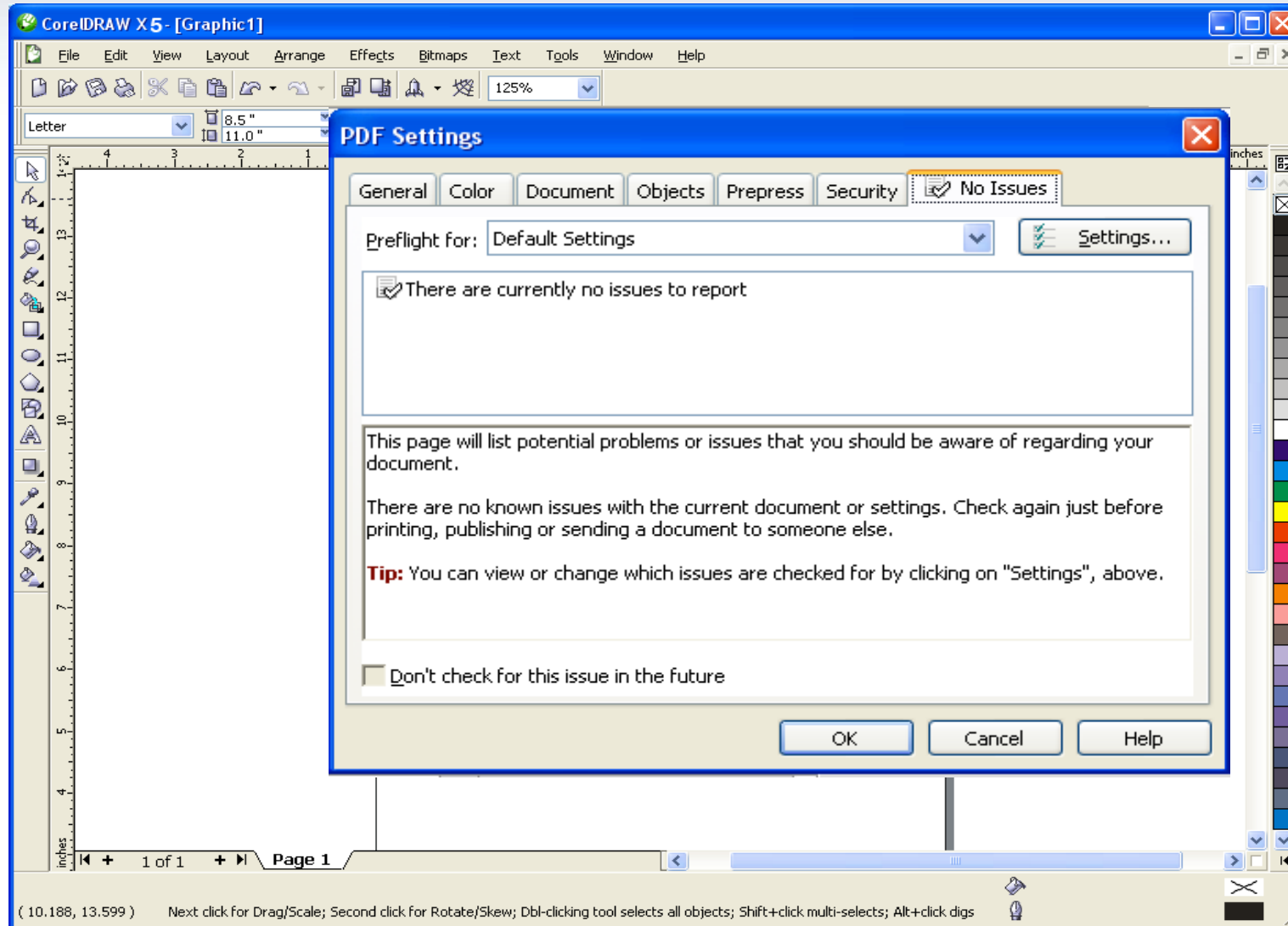
PDF creation in Corel X5



PDF creation in Corel X5



PDF creation in Corel X5



PDF/X-1a Format:

ISO 15930-1:2001: PDF/X-1a: 2001

PDF/x-1a is a subset of Adobe Portable Document format (PDF) specification. The format was developed to reduce some of the common errors encountered while creating PDFs for Print publishing.